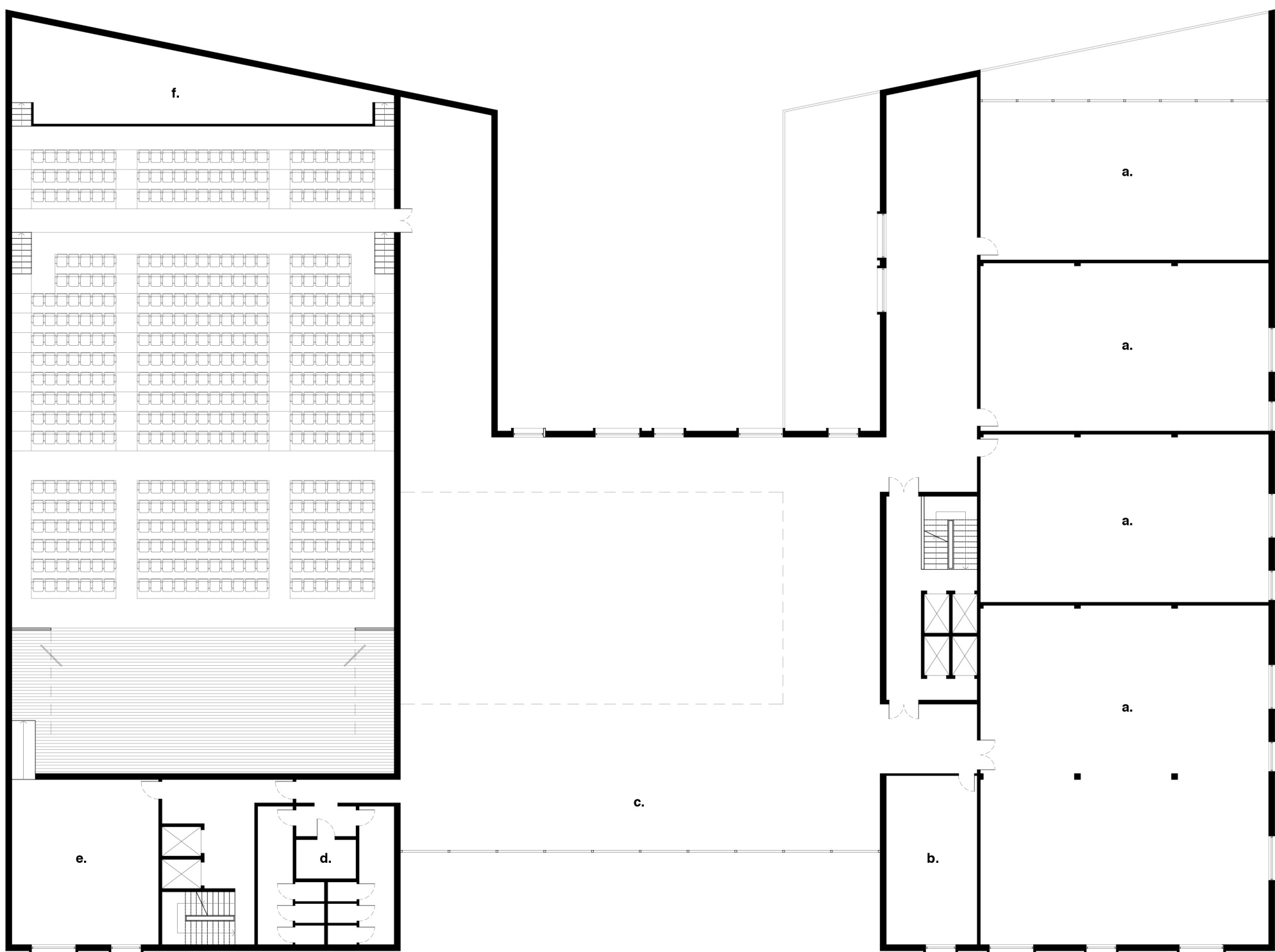


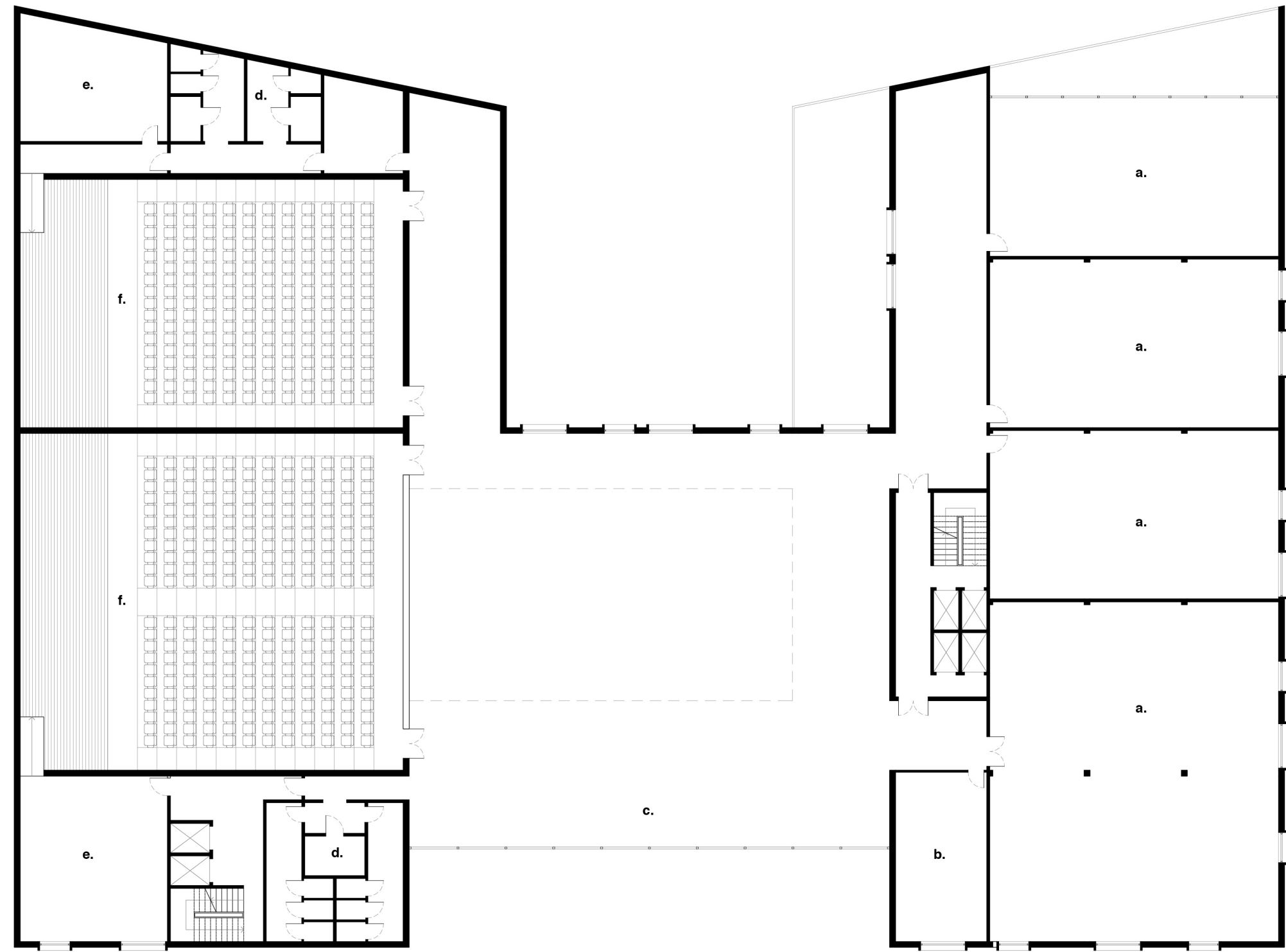
Piano terra centro congressi

- a. ingresso
- b. foyer
- c. area ristorazione
- d. bagni
- e. magazzino
- f. sala principale
- g. sala secondaria
- h. uffici
- i. guardaroba



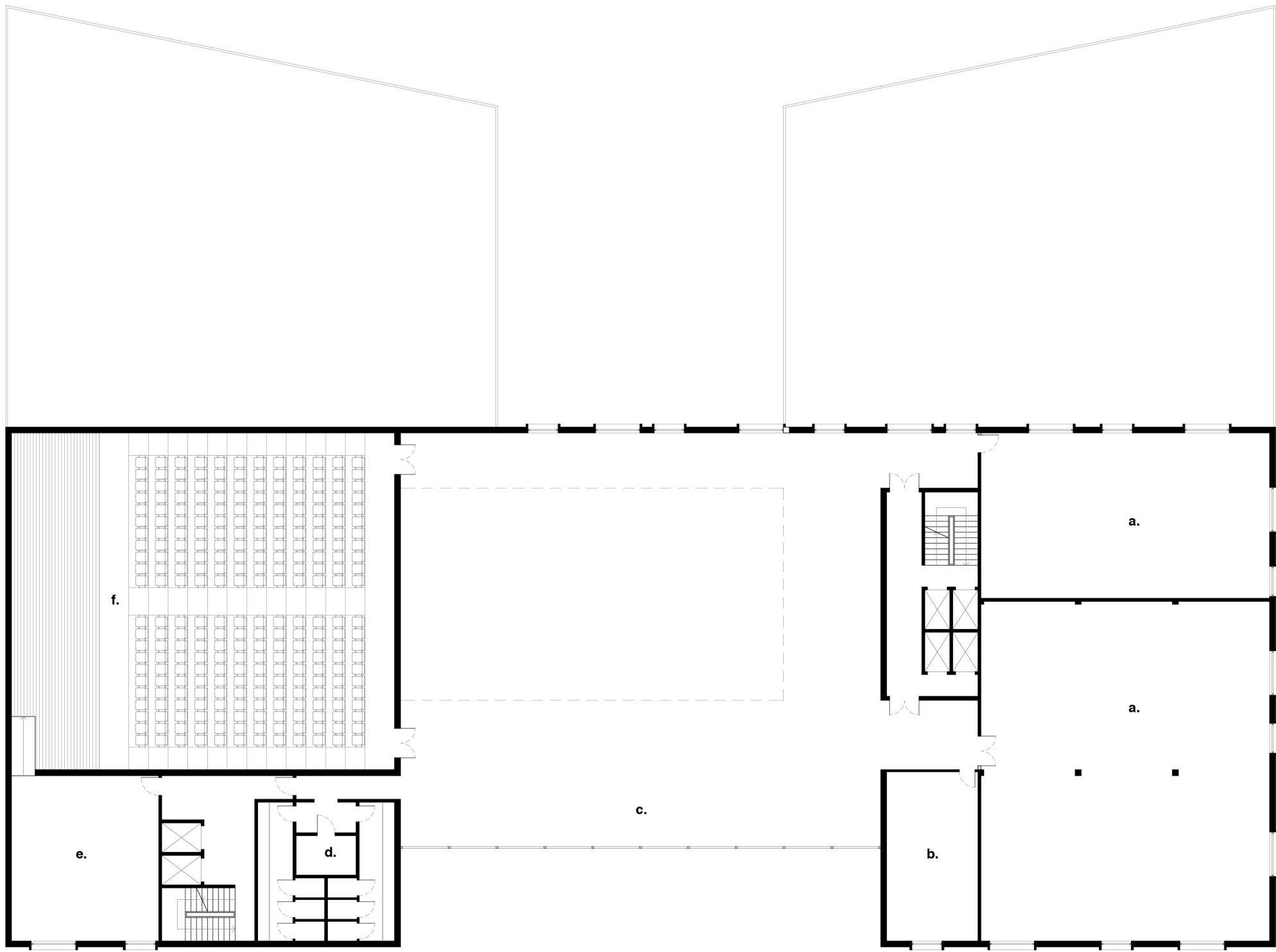
Piano primo centro congressi

- a. laboratori
- b. uffici
- c. area comune
- d. bagni
- e. camerini
- f. sala proiezioni e suoni



Piano secondo centro congressi

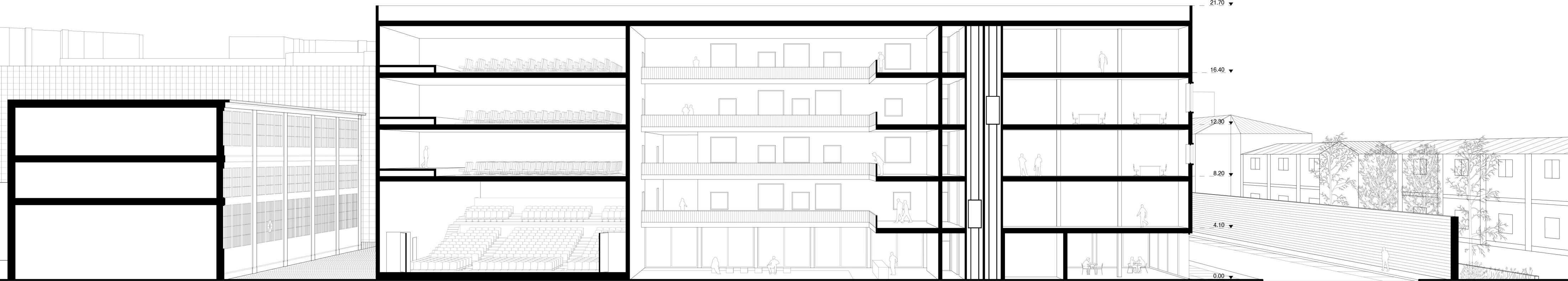
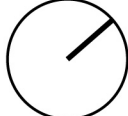
- a. laboratori
- b. uffici
- c. area comune
- d. bagni
- e. camerini
- f. sala secondaria



Piano tipo centro congressi

- a. laboratori
- b. uffici
- c. area comune
- d. bagni
- e. camerini
- f. sala secondaria

0 1 2 4 6 8 10



Sezione prospettica centro congressi

0 1 2 4 6 8 10